

# BYGG F

---

**8 etasjer**

3.-8. etasje: Leiligheter

3. etasje: inngang fra  
gårdsrom

Antall leiligheter: 22

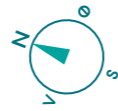
Størrelser (BRA-i):

**Fra 46,4 til 133,3 m<sup>2</sup>**

---

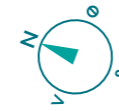
# F301

97-H0302



1m

1m

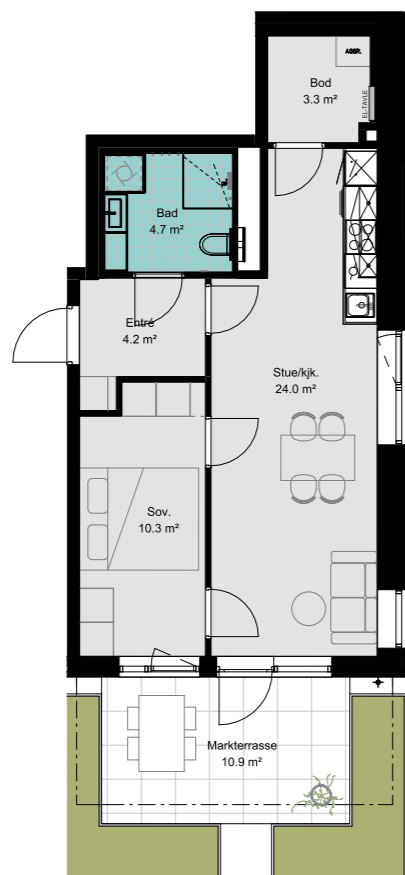


# F302

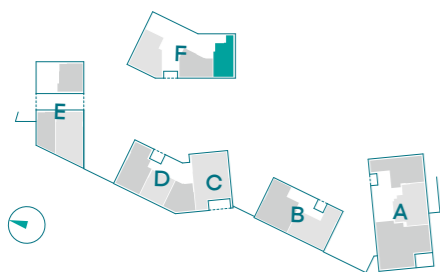
97-H0303

3. etasje

3. etasje



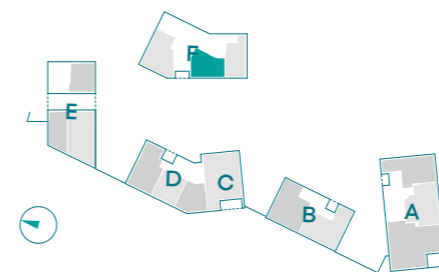
Unntatt fra krav om tilgjengelig boenhet.



BRA-i: **49.7 m<sup>2</sup>**  
 BRA-e (Sportsbod): **5 m<sup>2</sup>**  
 BRA: **54.7 m<sup>2</sup>**  
 TBA (Terrasse/balkong): **10.9 m<sup>2</sup>**



Fasade vest



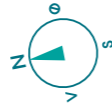
BRA-i: **52 m<sup>2</sup>**  
 BRA-e (Sportsbod): **5 m<sup>2</sup>**  
 BRA: **57 m<sup>2</sup>**  
 TBA (Terrasse/balkong): **19.2 m<sup>2</sup>**



Fasade vest

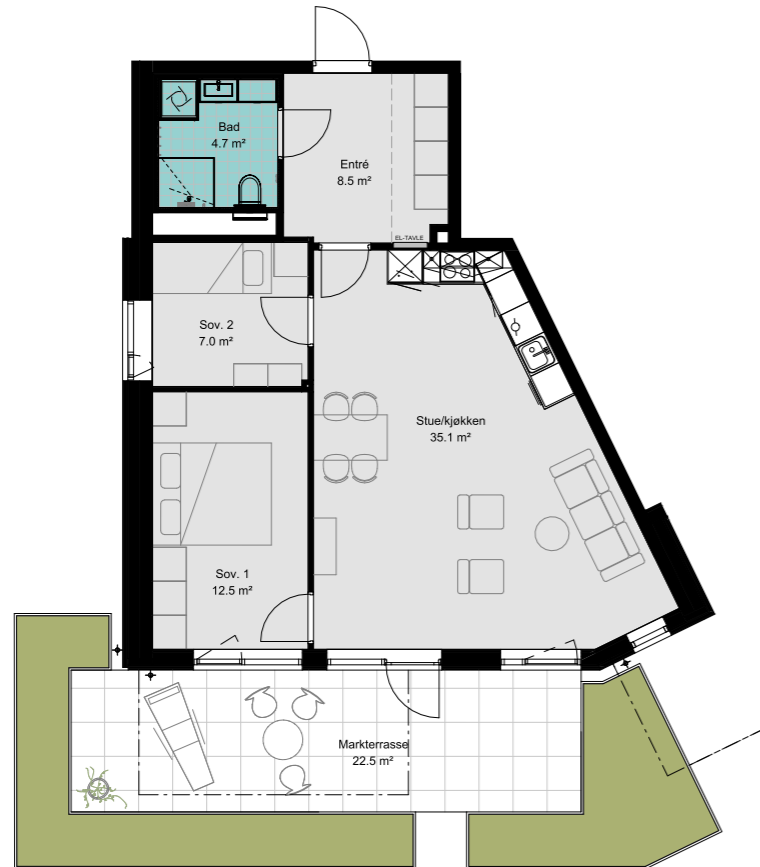
# F303

97-H0301

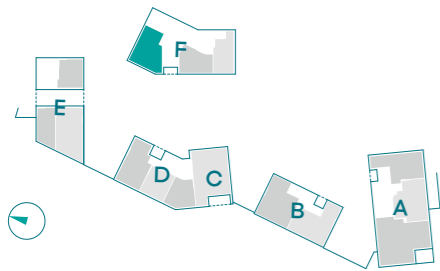


1m

3. etasje



Ny leilighet.



BRA-i: **70.9 m<sup>2</sup>**  
BRA-e (Sportsbod): **5 m<sup>2</sup>**  
BRA: **75.9 m<sup>2</sup>**  
TBA (Terrasse/balkong): **22.5 m<sup>2</sup>**

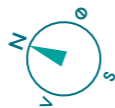


Fasade vest



# F401

97-H0401



1m

1m

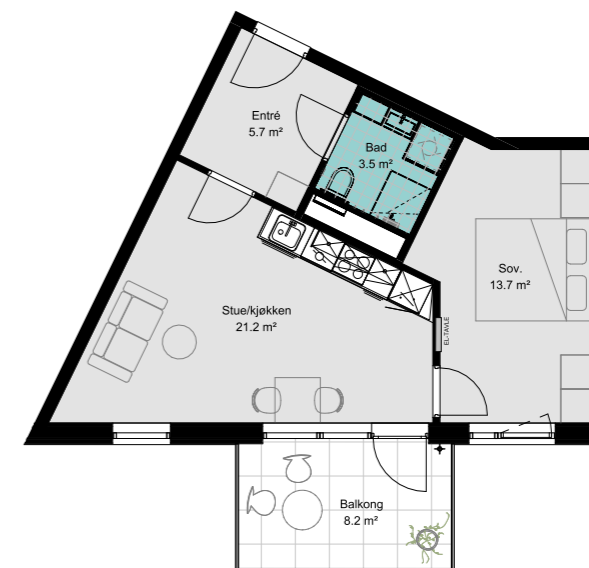
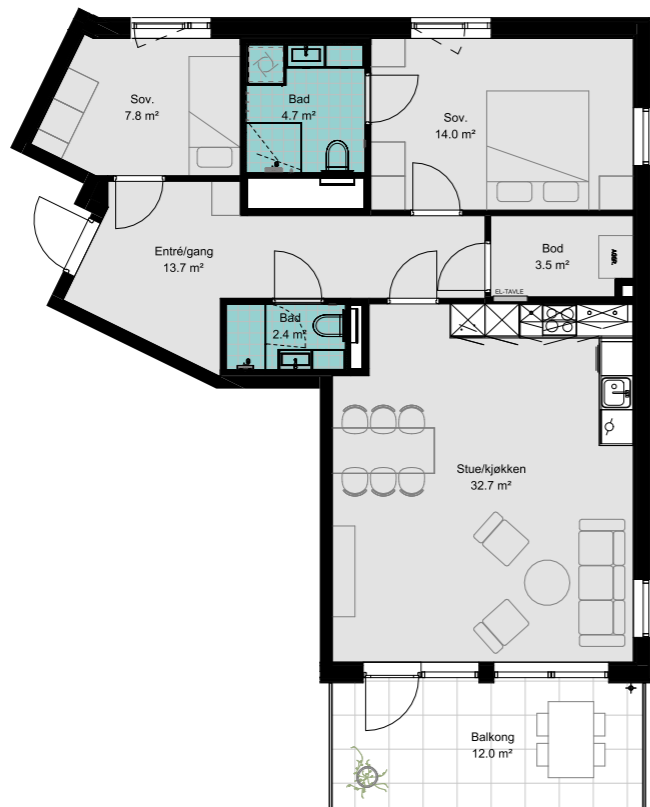


# F402

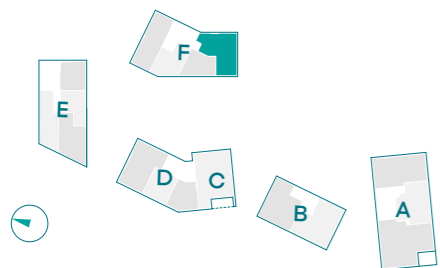
97-H0402

4. etasje

4. etasje



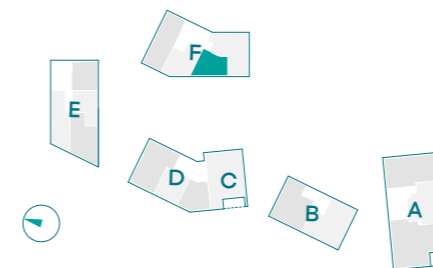
Unntatt fra krav om tilgjengelig boenhet.



BRA-i: **83.4 m<sup>2</sup>**  
 BRA-e (Sportsbod): **5 m<sup>2</sup>**  
 BRA: **88.4 m<sup>2</sup>**  
 TBA (Terrasse/balkong): **12 m<sup>2</sup>**



Fasade vest



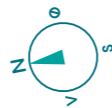
BRA-i: **46.4 m<sup>2</sup>**  
 BRA-e (Sportsbod): **5 m<sup>2</sup>**  
 BRA: **51.4 m<sup>2</sup>**  
 TBA (Terrasse/balkong): **8.2 m<sup>2</sup>**



Fasade vest

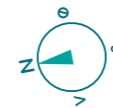
# F403

97-H0403



1m

1m

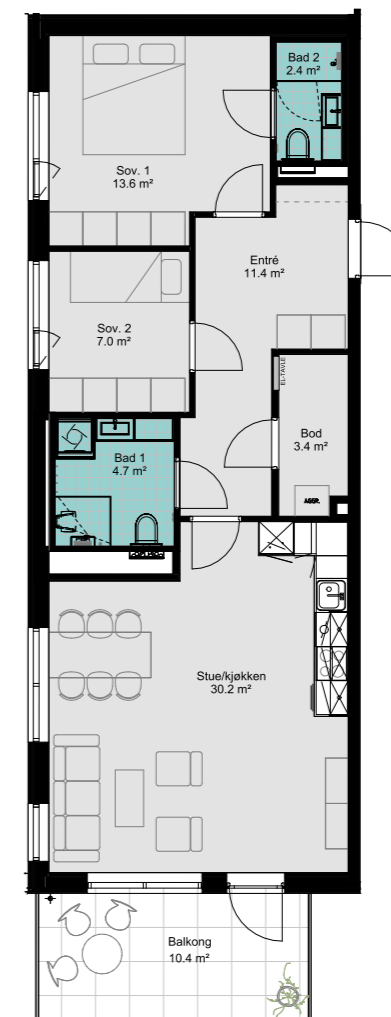
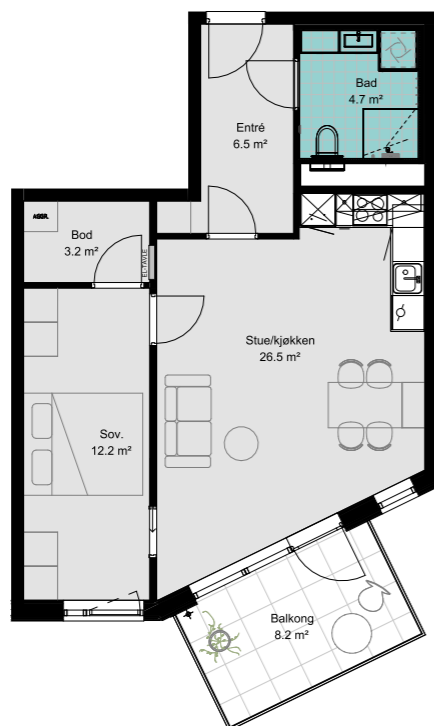


# F404

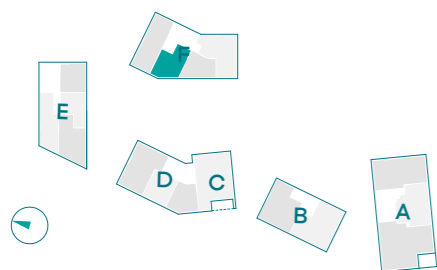
97-H0404

4. etasje

4. etasje



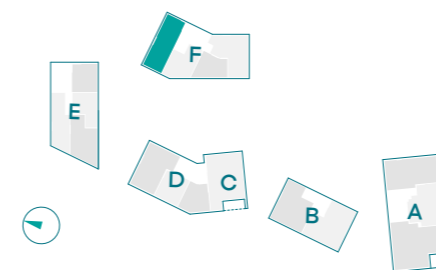
Ny leilighet.



BRA-i: **56.2 m<sup>2</sup>**  
BRA-e (Sportsbod): **5 m<sup>2</sup>**  
BRA: **61.2 m<sup>2</sup>**  
TBA (Terrasse/balkong): **8.2 m<sup>2</sup>**



Fasade vest



BRA-i: **77.2 m<sup>2</sup>**  
BRA-e (Sportsbod): **5 m<sup>2</sup>**  
BRA: **82.2 m<sup>2</sup>**  
TBA (Terrasse/balkong): **10.4 m<sup>2</sup>**



Fasade vest

# F501

97-H0501



1m

1m

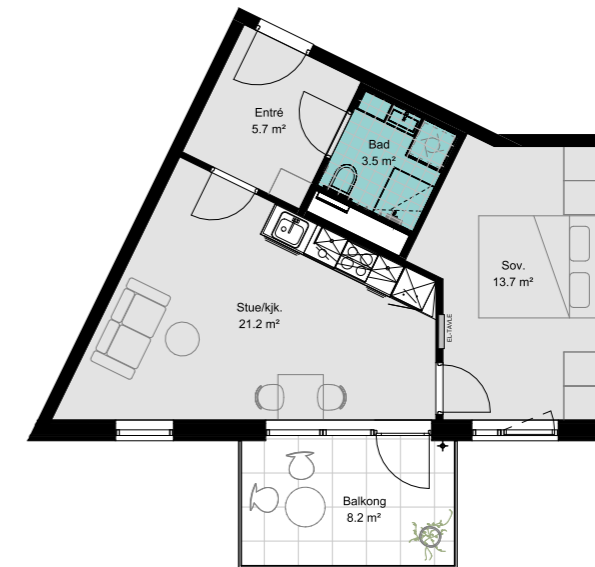
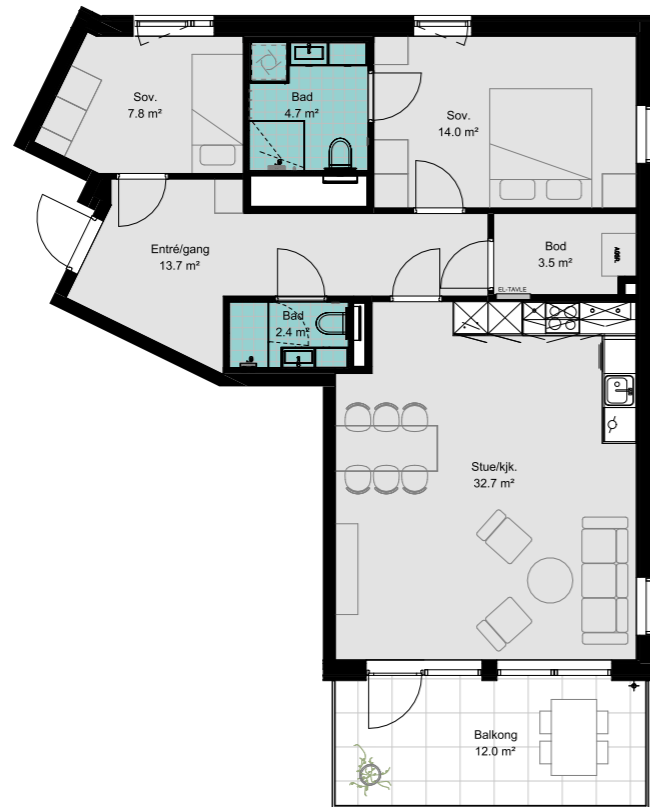


# F502

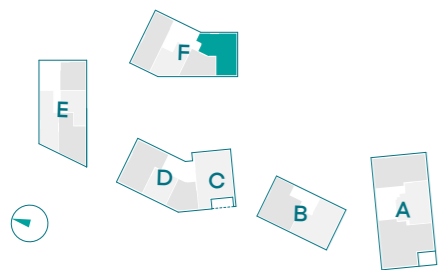
97-H0502

5. etasje

5. etasje



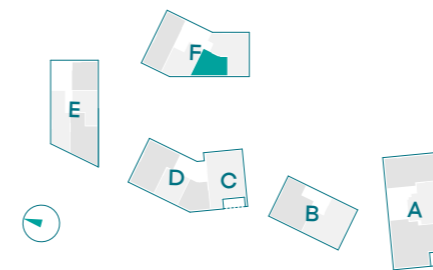
Unntatt fra krav om tilgjengelig boenhet.



BRA-i: **83.4 m<sup>2</sup>**  
 BRA-e (Sportsbod): **5 m<sup>2</sup>**  
 BRA: **88.4 m<sup>2</sup>**  
 TBA (Terrasse/balkong): **12 m<sup>2</sup>**



Fasade vest



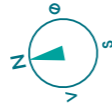
BRA-i: **46.4 m<sup>2</sup>**  
 BRA-e (Sportsbod): **5 m<sup>2</sup>**  
 BRA: **51.4 m<sup>2</sup>**  
 TBA (Terrasse/balkong): **8.2 m<sup>2</sup>**



Fasade vest

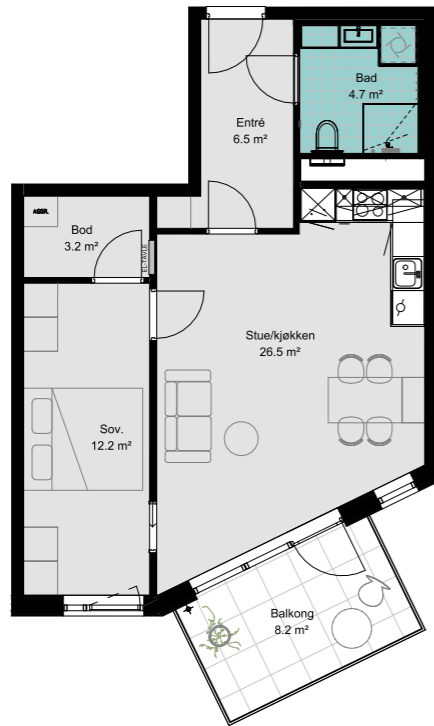
# F503

97-H0503



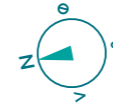
1m

5. etasje



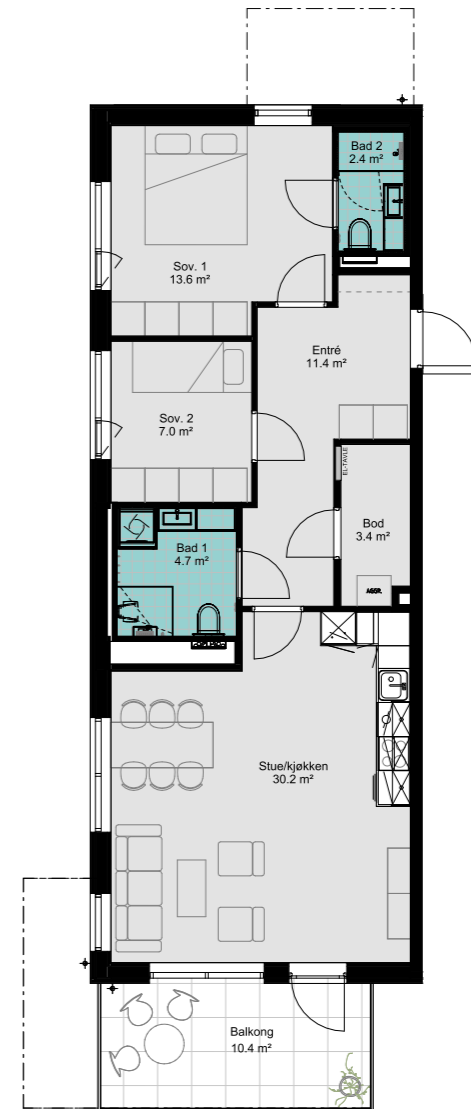
# F504

97-H0504

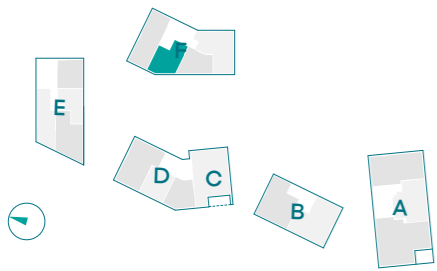


1m

5. etasje



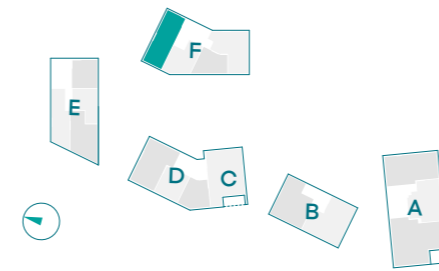
Ny leilighet.



BRA-i: **56.2 m<sup>2</sup>**  
 BRA-e (Sportsbod): **5 m<sup>2</sup>**  
 BRA: **61.2 m<sup>2</sup>**  
 TBA (Terrasse/balkong): **8.2 m<sup>2</sup>**



Fasade vest



BRA-i: **77.2 m<sup>2</sup>**  
 BRA-e (Sportsbod): **5 m<sup>2</sup>**  
 BRA: **82.2 m<sup>2</sup>**  
 TBA (Terrasse/balkong): **10.4 m<sup>2</sup>**



Fasade vest

# F601

97-H0601



1m

1m

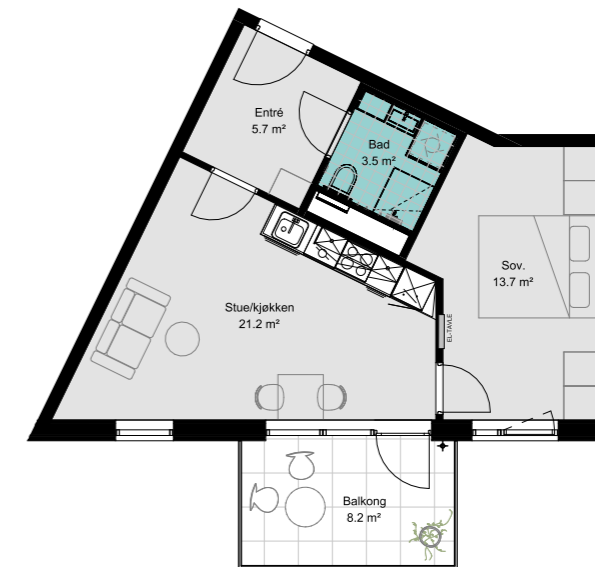
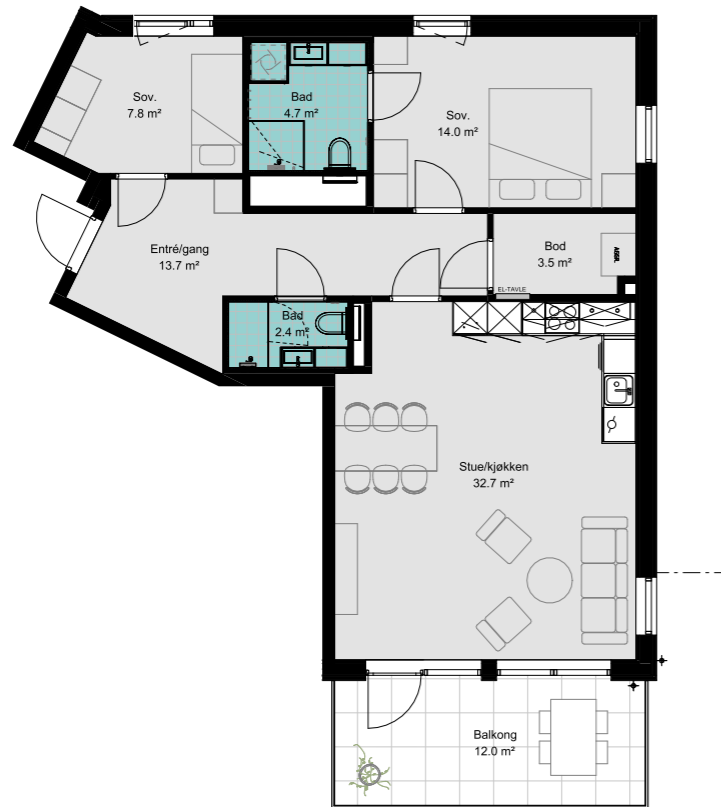


# F602

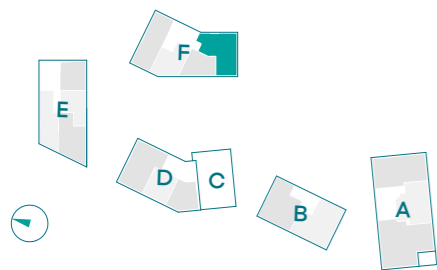
97-H0602

6. etasje

6. etasje



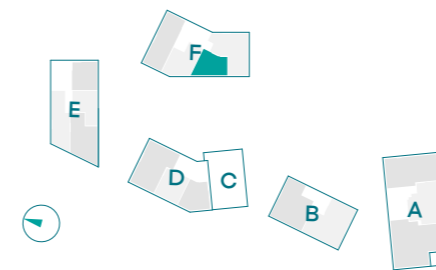
Unntatt fra krav om tilgjengelig boenhet.



BRA-i: **83.4 m<sup>2</sup>**  
 BRA-e (Sportsbod): **5 m<sup>2</sup>**  
 BRA: **88.4 m<sup>2</sup>**  
 TBA (Terrasse/balkong): **12 m<sup>2</sup>**



Fasade vest



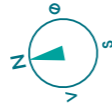
BRA-i: **46.4 m<sup>2</sup>**  
 BRA-e (Sportsbod): **5 m<sup>2</sup>**  
 BRA: **51.4 m<sup>2</sup>**  
 TBA (Terrasse/balkong): **8.2 m<sup>2</sup>**



Fasade vest

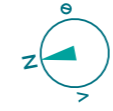
# F603

97-H0603



1m

1m

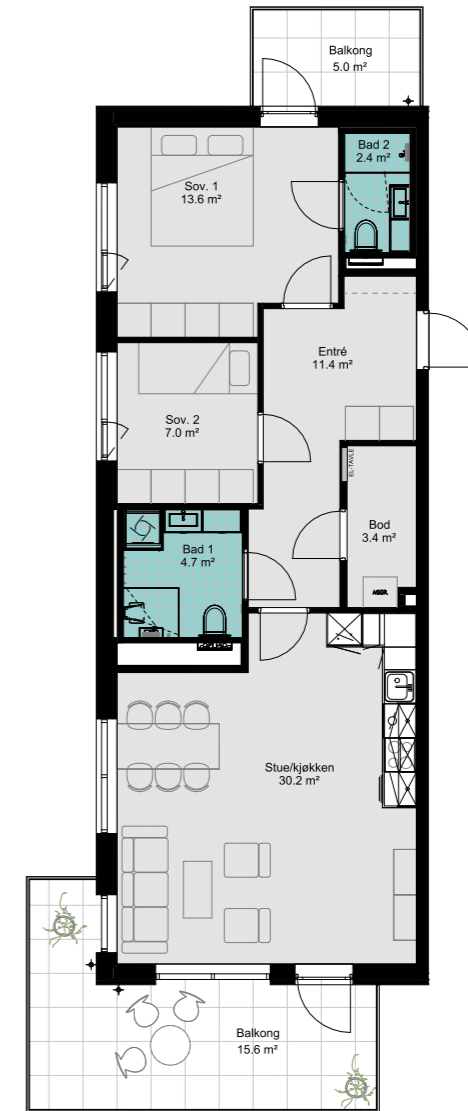
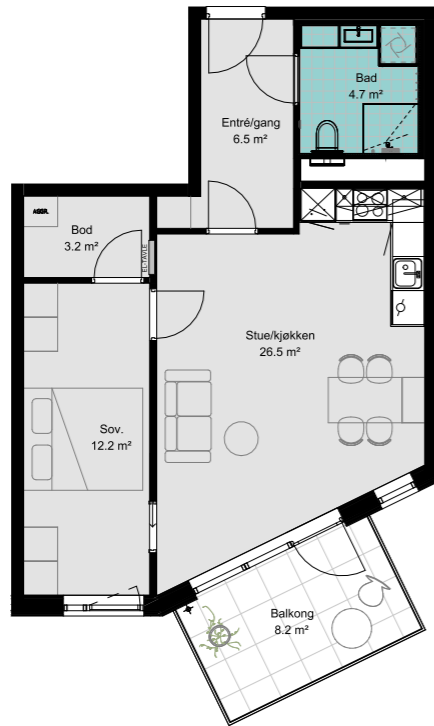


# F604

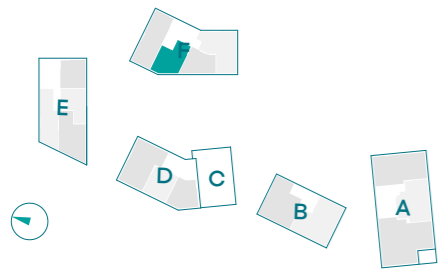
97-H0604

6. etasje

6. etasje

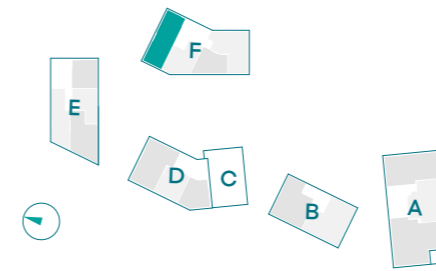


Ny leilighet.



Fasade vest

BRA-i: **56.2 m<sup>2</sup>**  
 BRA-e (Sportsbod): **5 m<sup>2</sup>**  
 BRA: **61.2 m<sup>2</sup>**  
 TBA (Terrasse/balkong): **8.2 m<sup>2</sup>**

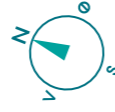


Fasade vest

BRA-i: **77.2 m<sup>2</sup>**  
 BRA-e (Sportsbod): **5 m<sup>2</sup>**  
 BRA: **82.2 m<sup>2</sup>**  
 TBA (Terrasse/balkong): **20.6 m<sup>2</sup>**

# F701

97-H0701



1m

1m

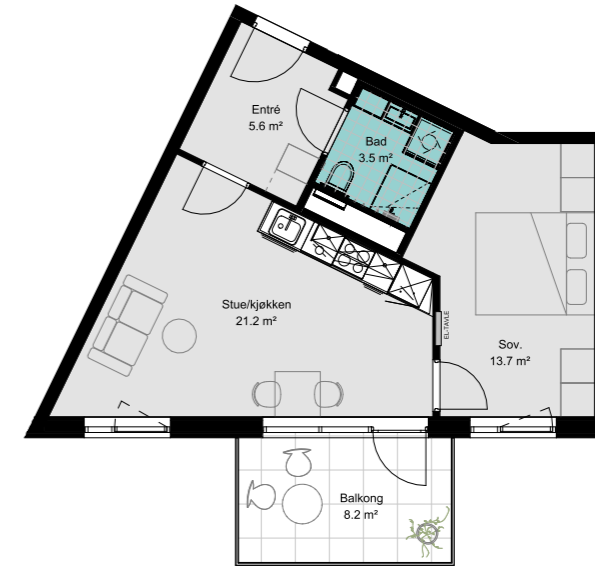


# F702

97-H0702

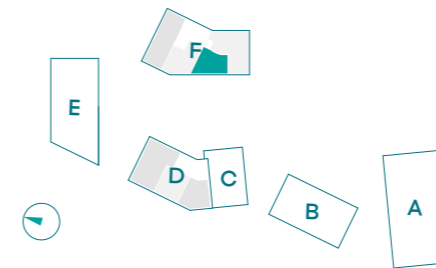
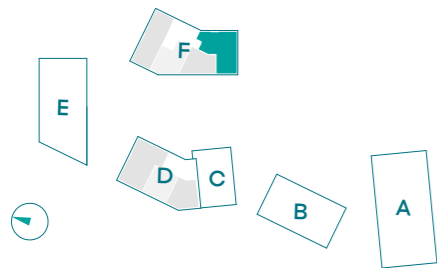
7. etasje

7. etasje



Ny leilighet.

Ny leilighet.



BRA-i: **83.4 m<sup>2</sup>**  
BRA-e (Sportsbod): **5 m<sup>2</sup>**  
BRA: **88.4 m<sup>2</sup>**  
TBA (Terrasse/balkong): **17.2 m<sup>2</sup>**

BRA-i: **46.4 m<sup>2</sup>**  
BRA-e (Sportsbod): **5 m<sup>2</sup>**  
BRA: **51.4 m<sup>2</sup>**  
TBA (Terrasse/balkong): **8.2 m<sup>2</sup>**



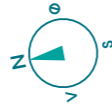
Fasade vest



Fasade vest

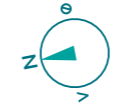
# F703

97-H0703



1m

1m

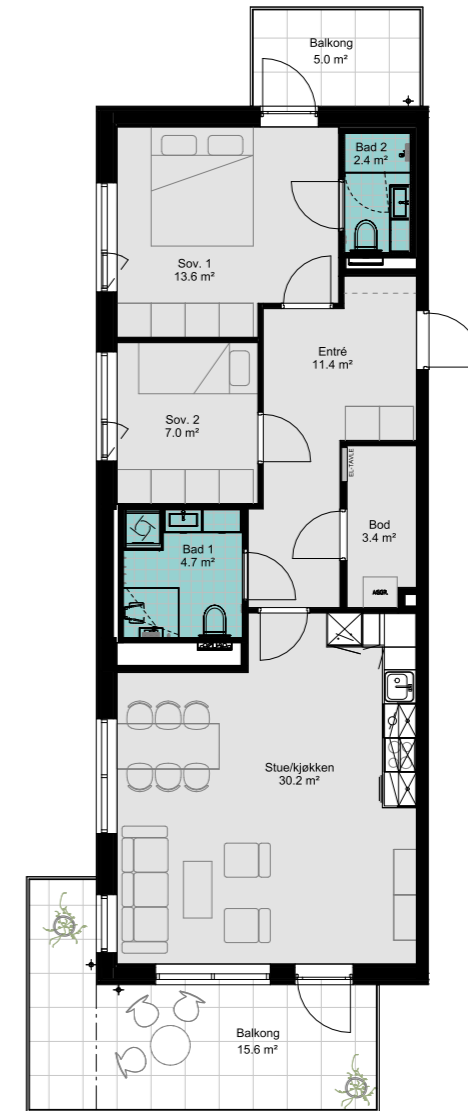
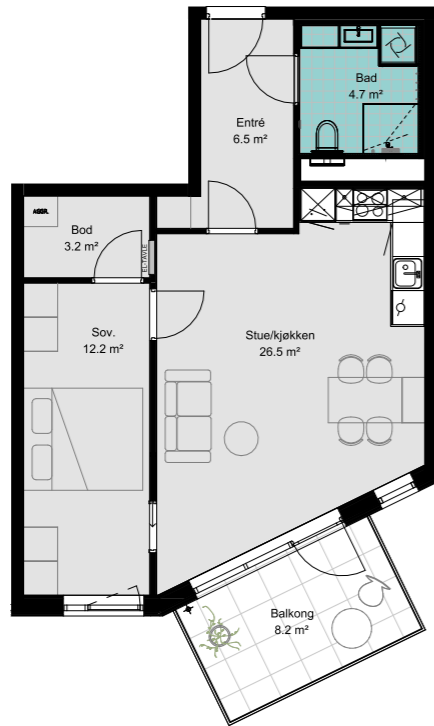


# F704

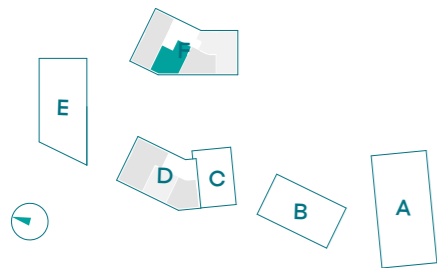
97-H0704

7. etasje

7. etasje

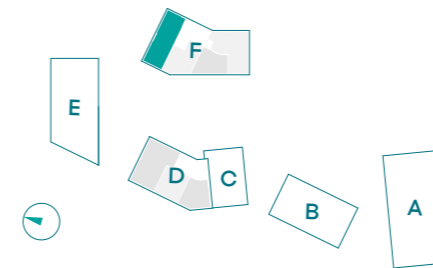


Ny leilighet.



Fasade vest

BRA-i: **56.2 m<sup>2</sup>**  
 BRA-e (Sportsbod): **5 m<sup>2</sup>**  
 BRA: **61.2 m<sup>2</sup>**  
 TBA (Terrasse/balkong): **8.2 m<sup>2</sup>**



Fasade vest

BRA-i: **77.2 m<sup>2</sup>**  
 BRA-e (Sportsbod): **5 m<sup>2</sup>**  
 BRA: **82.2 m<sup>2</sup>**  
 TBA (Terrasse/balkong): **20.6 m<sup>2</sup>**

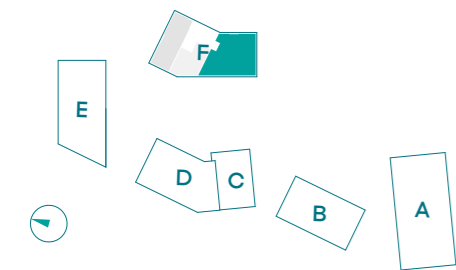
# F801

97-H0801



1m

8. etasje



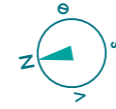
BRA-i: **133.3 m<sup>2</sup>**  
 BRA-e (Sportsbod): **5 m<sup>2</sup>**  
 BRA: **138.3 m<sup>2</sup>**  
 TBA (Terrasse/balkong): **17.2 m<sup>2</sup>**



Fasade vest

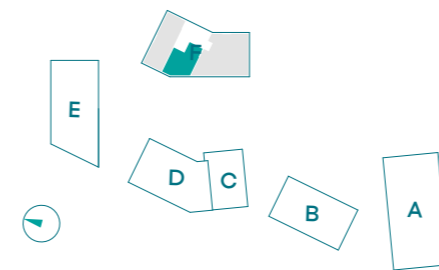
# F802

97-H0802



1m

8. etasje



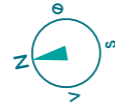
BRA-i: **56.2 m<sup>2</sup>**  
 BRA-e (Sportsbod): **5 m<sup>2</sup>**  
 BRA: **61.2 m<sup>2</sup>**  
 TBA (Terrasse/balkong): **8.2 m<sup>2</sup>**



Fasade vest

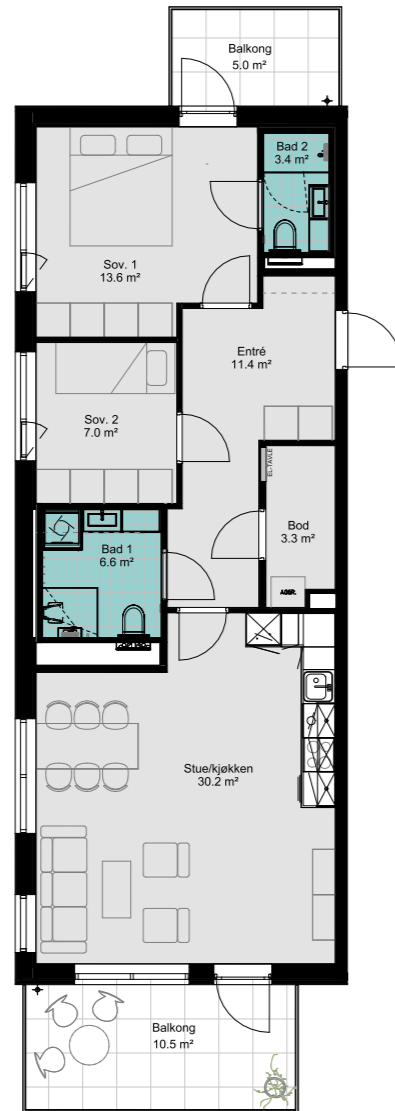
# F803

97-H0803

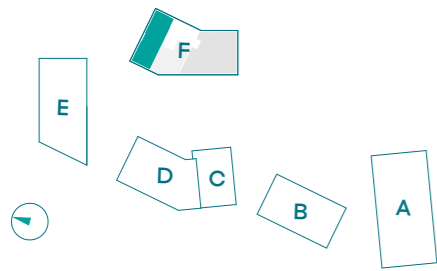


1m

## 8. etasje



Ny leilighet.



BRA-i: **77.2 m<sup>2</sup>**  
BRA-e (Sportsbod): **5 m<sup>2</sup>**  
BRA: **82.2 m<sup>2</sup>**  
TBA (Terrasse/balkong): **15.5 m<sup>2</sup>**



Fasade vest





Alle tegninger og 3D-illustrasjoner er kun ment å gi inntrykk av ferdig bebyggelse/utsikt/omgivelser og kan således inneholde elementer som ikke inngår i utbyggers leveranse. Det tas forbehold om feil, samt utbyggers rett til å gjøre endringer som er hensiktsmessige og nødvendige uten å forringe den generelle standard som er beskrevet. Forbehold gjelder alt trykket og digitalt materiell for Kanalbyen. Mars 2026.

---

**Rita Ommundsen**  
M: 990 99 108  
rita.ommundsen@emnorge.no



**Rolf R. Elieson**  
M: 990 99 107  
rolf.elieson@emnorge.no